



Public Involvement Meeting

Wisconsin Avenue Bridge over Honey Creek

City of Wauwatosa

Milwaukee County Project ID: 2190-10-00



February 22, 2024
5 – 7 p.m.



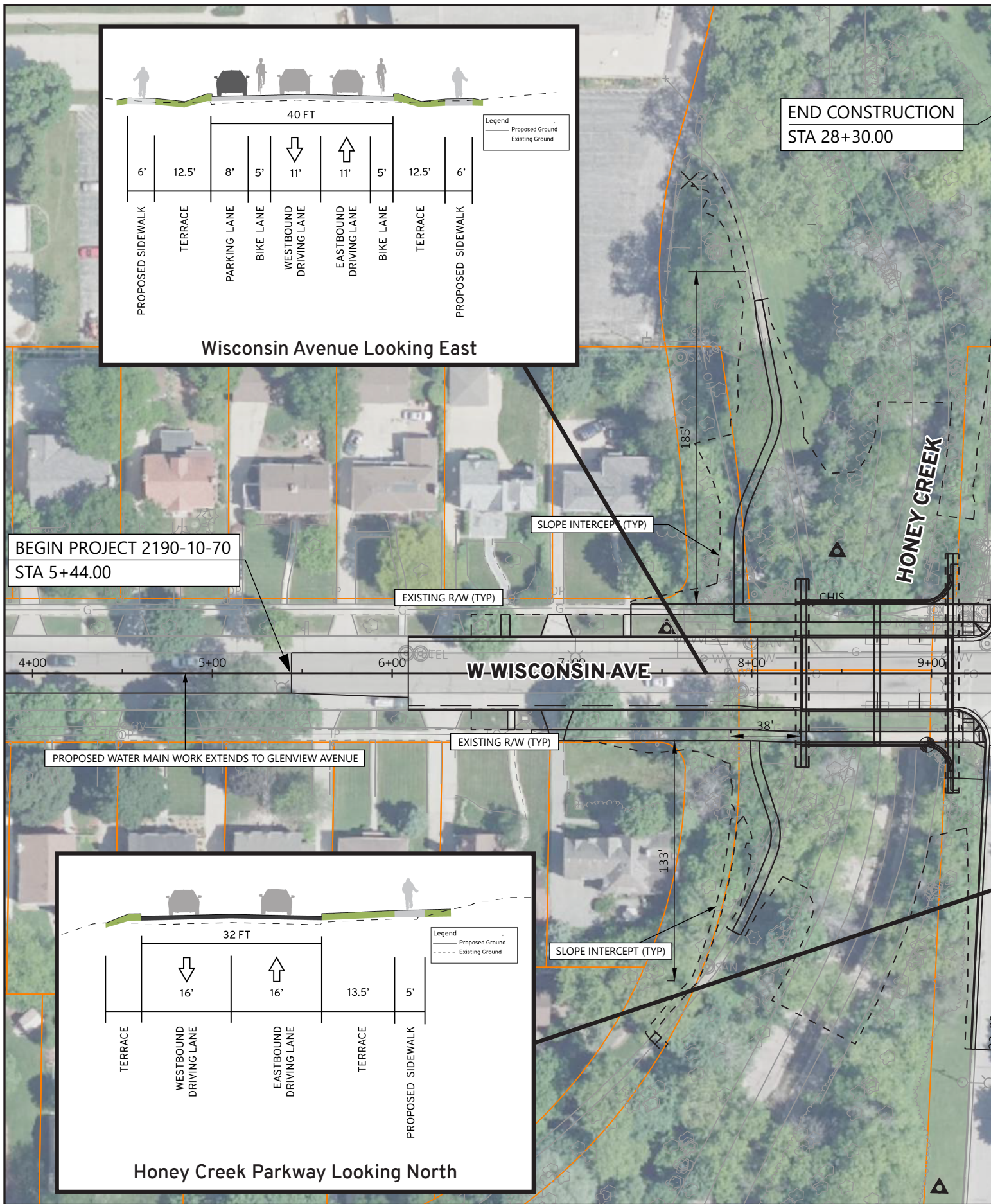
St. Jude the Apostle Catholic Parish
800 Glenview Avenue, Wauwatosa, WI 53213

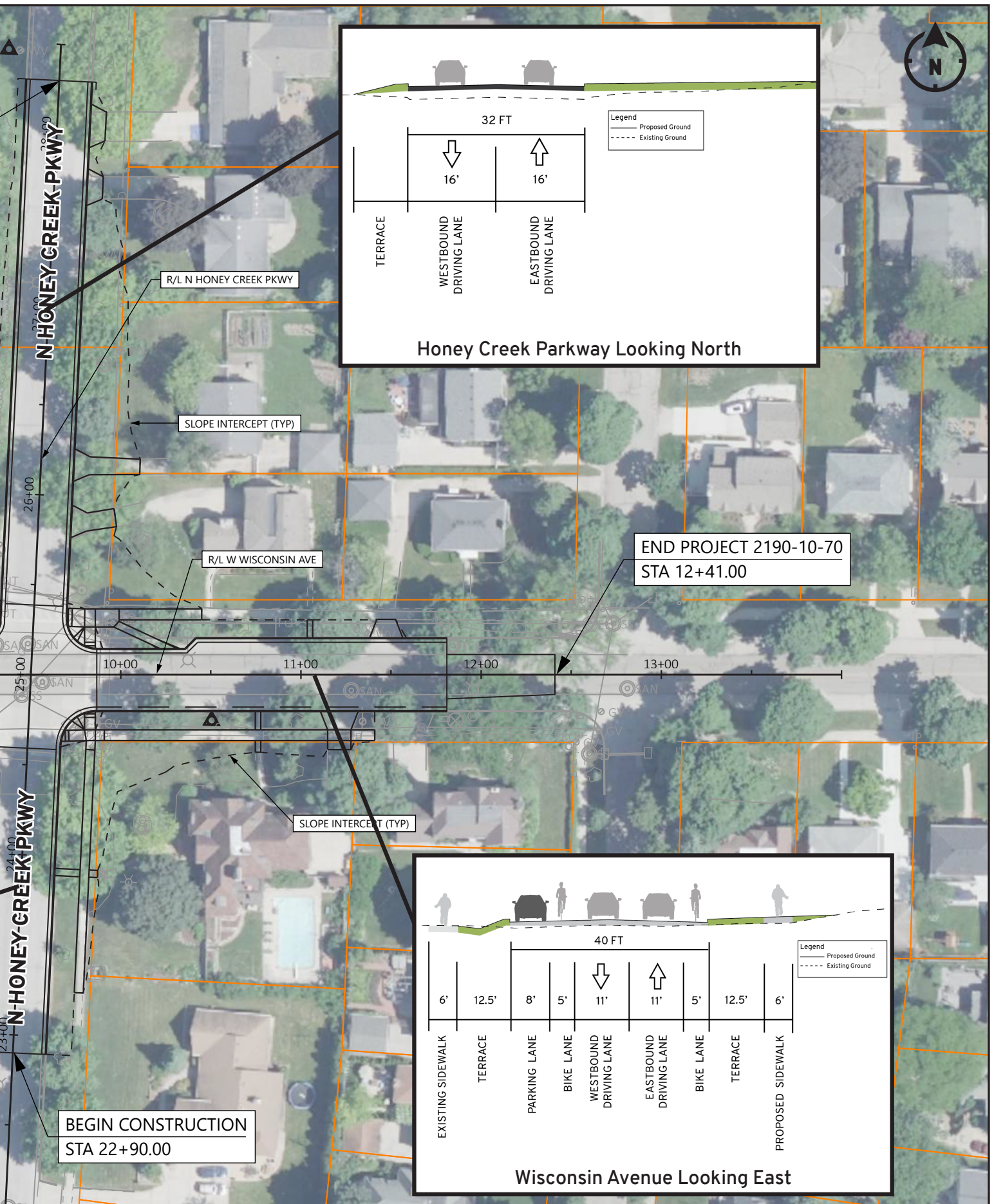


Purpose of the Meeting

Wisconsin Avenue is an east-west urban route consisting of a two-lane undivided roadway with on-street parking, curb and gutter, and storm sewer. There are existing sidewalk and a grass terrace located on both sides of Wisconsin Avenue. The intersection of Honey Creek Parkway is immediately adjacent to the east side of the existing bridge. Wisconsin Avenue is classified as a minor arterial with an Average Annual Daily Traffic (AADT) count of 7,260 (2021) vehicles and a posted speed limit of 30 mph.

The existing Wisconsin Avenue bridge over Honey Creek (Bridge No. P-40-776) is a contributing element to Honey Creek Parkway, which is listed on the National Register of Historic Places. The existing bridge is a single-span, concrete girder bridge with decorative limestone on its abutments and parapets. The bridge measures 80'-0" wide, with a single-span length of 29'-8" and a total length of 46'-2" with abutments.

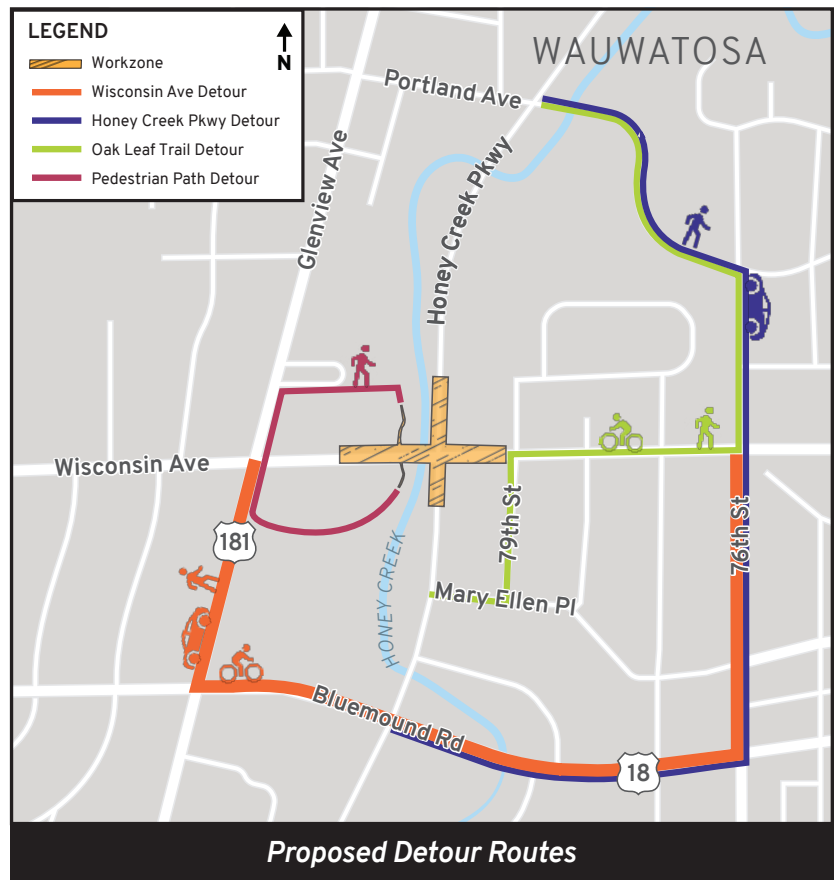




Project Components

The scope of the proposed action includes:

- Replacing the existing single-span bridge with a two-span concrete haunched slab structure (B-40-1033). The bridge will measure 80'-0" wide like the existing bridge. The span length will measure 82'-0" with a total length of 84'-6" including abutments.
- Realigning the Honey Creek channel approximately 12' west to match the wider bridge. The existing concrete channel lining will be removed within this section of Honey Creek.
- Raising the Wisconsin Avenue roadway and bridge profile 3.3' resulting in approximately 510' of roadway reconstruction work along Wisconsin Avenue and 545' of roadway reconstruction work along Honey Creek Parkway (Road).
- Consistent with the projects warrant analysis, installing a traffic signal at the Wisconsin Avenue intersection with Honey Creek Parkway (Road) to reduce crash rates is included.
- To be compliant with the City of Wauwatosa Bicycle and Pedestrian Plan, removing on-street parking from the south side of Wisconsin Avenue to provide room for installing 5' bicycle lanes in each direction within the existing Wisconsin Avenue roadway footprint is included.
- Replacing existing sidewalk impacted by the project.
- Installing ADA-compliant curb ramps at the Wisconsin Avenue and Honey Creek Parkway (Road) intersection.
- Realigning the existing pedestrian path on the west side of Honey Creek due to the raised roadway and bridge profile.
- Replacing municipal water main facilities and laterals between Glenview Avenue and N. 79th Street and connecting to a neighboring water main to create a looped network allowing for greater fire protection capacity and numerous pathways to serve residents. This would provide a more reliable water distribution system.
- Upgrading municipal and Milwaukee County street lighting systems impacted by the project.
- Updating pavement marking and roadway signage.



Contact

For more information about the project, please contact:

Aaron Bubb, P.E. • Project Manager

Kapur

☎ (414) 751-7230

✉ abubb@kapurinc.com

Bill Wehrley, P.E. • City Engineer

City of Wauwatosa

☎ (414) 479-8929

✉ wwhehrley@wauwatosa.net