

PROJECT ID 2190-10-00

Wisconsin Avenue Bridge
Over Honey Creek
City of Wauwatosa
Milwaukee County

Public Involvement Meeting #2
February 22, 2024



Introductions



Aaron Bubb

Project Manager, Kapur
abubb@kapurinc.com
414.751.7230



Michael Baird

Project Manager, WisDOT
Michael. Baird@dot.wi.gov
262.548.5918

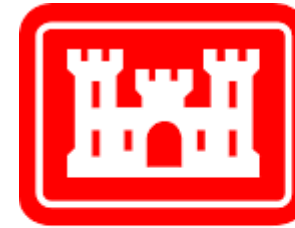


Bill Wehrley

City Engineer, Wauwatosa
wwehrley@wauwatosa.net
414.479.8929



Project Partners

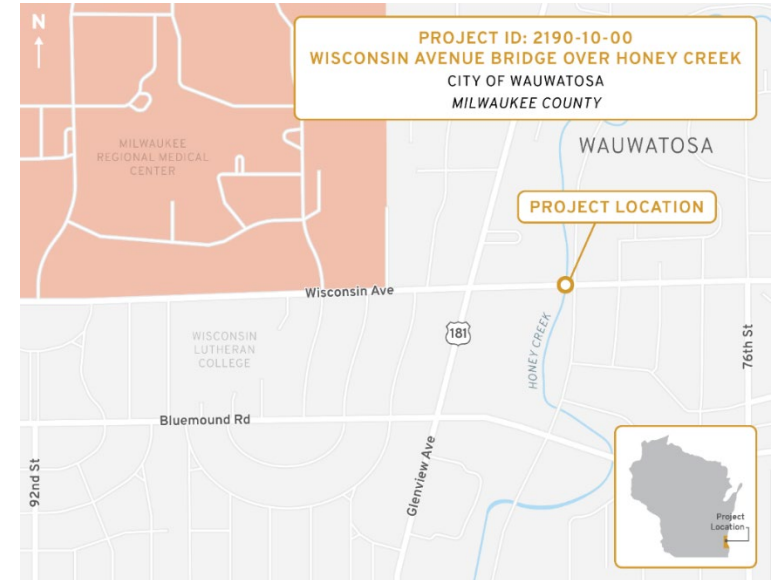


**US Army Corps
of Engineers®**



Project Information

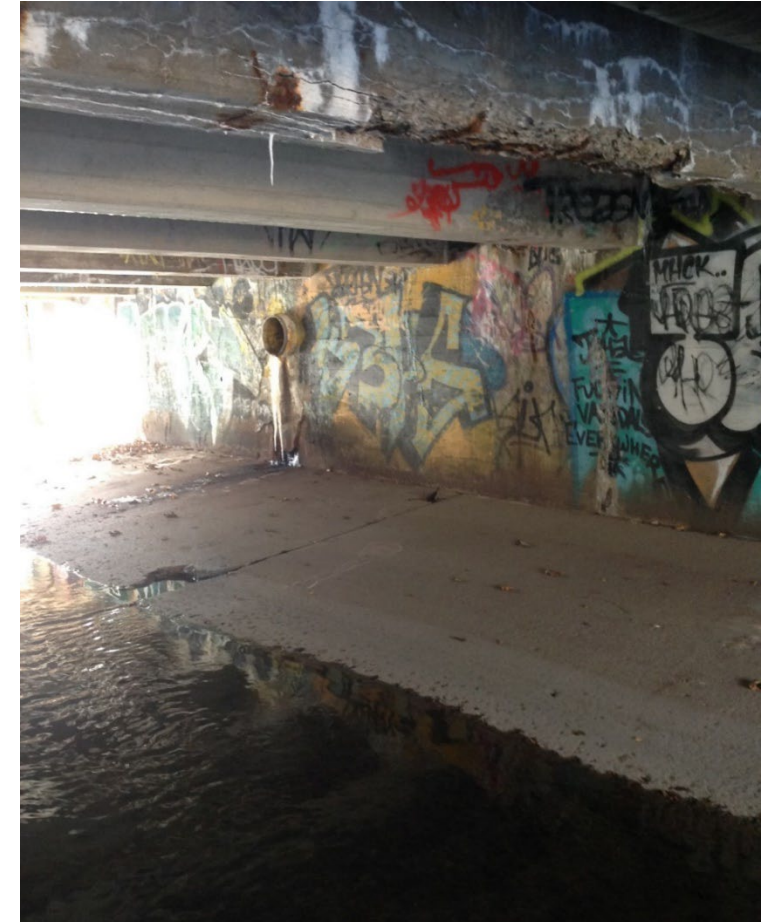
- + **City of Wauwatosa**
 - Wisconsin Avenue
 - Honey Creek
 - Honey Creek Parkway
- + **Safe Routes to School**
 - 3rd Highest Pedestrian Crossing
- + **Milwaukee Regional Medical Center**
 - Located 1/3 mile to the west
 - Level One Trauma Center
- + **Milwaukee County Parks**
 - Honey Creek Parkway
 - Oak Leaf Trail



Project Information

+ Reasons for the Project

- Bridge deficiencies
 - Original Construction in 1934 (P-40-776)
 - Bridge rating of 37.7 out of 100 is considered poor
- Bridge flooding & overtopping
 - 1.3 feet in the 10-year storm (10% recurrence)
 - 3 feet in the 100-year storm (1% recurrence)



Project Information

+ Reasons for the Project

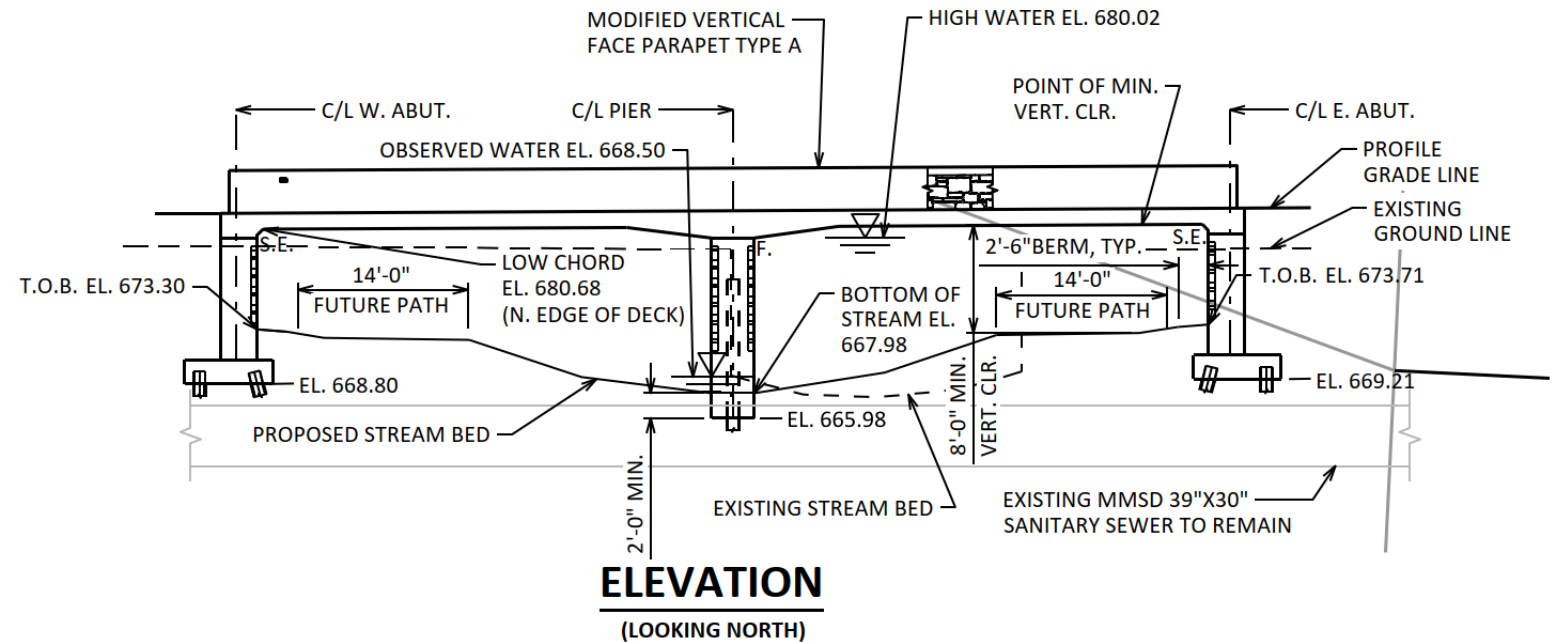
- Improve safety
 - 30 Crashes (2016-2020)
 - Intersection Crash Rate = 1.77 crashes/MEV (threshold for evaluating is 1.0)
 - Non-ADA compliant curb ramps
 - No on-street bicycle accommodations
- Replace 1920's water main



Preferred Alternative

+ Haunched Slab Bridge w/ Raised Profile (Two Span)

- Requires Wisconsin Ave to be raised ~ 3.3 feet
- Total span increases from ~26 feet to ~81 feet
- Proposed bridge width of 80 feet matches existing
- Channel shifts ~ 12 feet west
- Design to not preclude future paths underneath the bridge



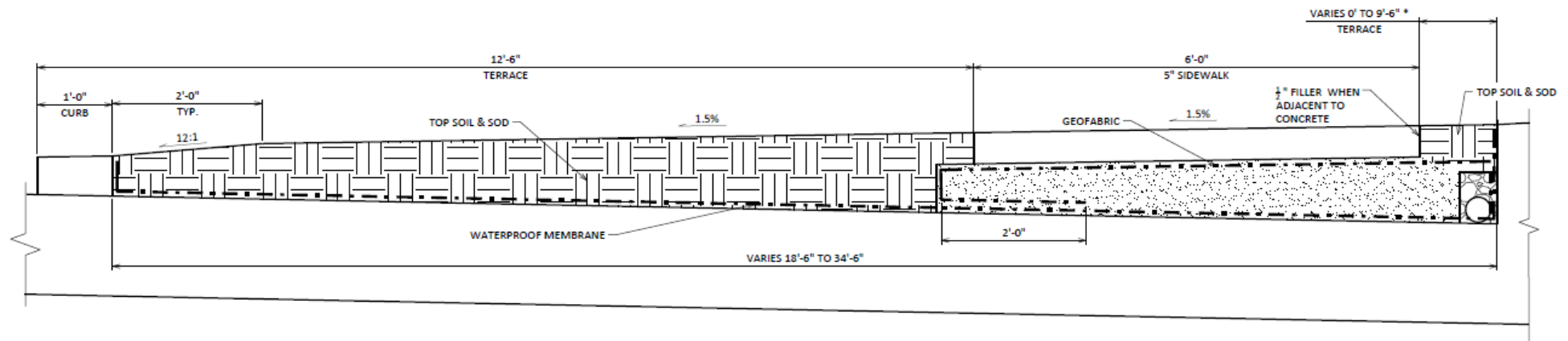
Preferred Alternative

- + Haunched Slab Bridge w/
Raised Profile (Two Span)
 - Rendering of proposed
bridge looking north



Preferred Alternative

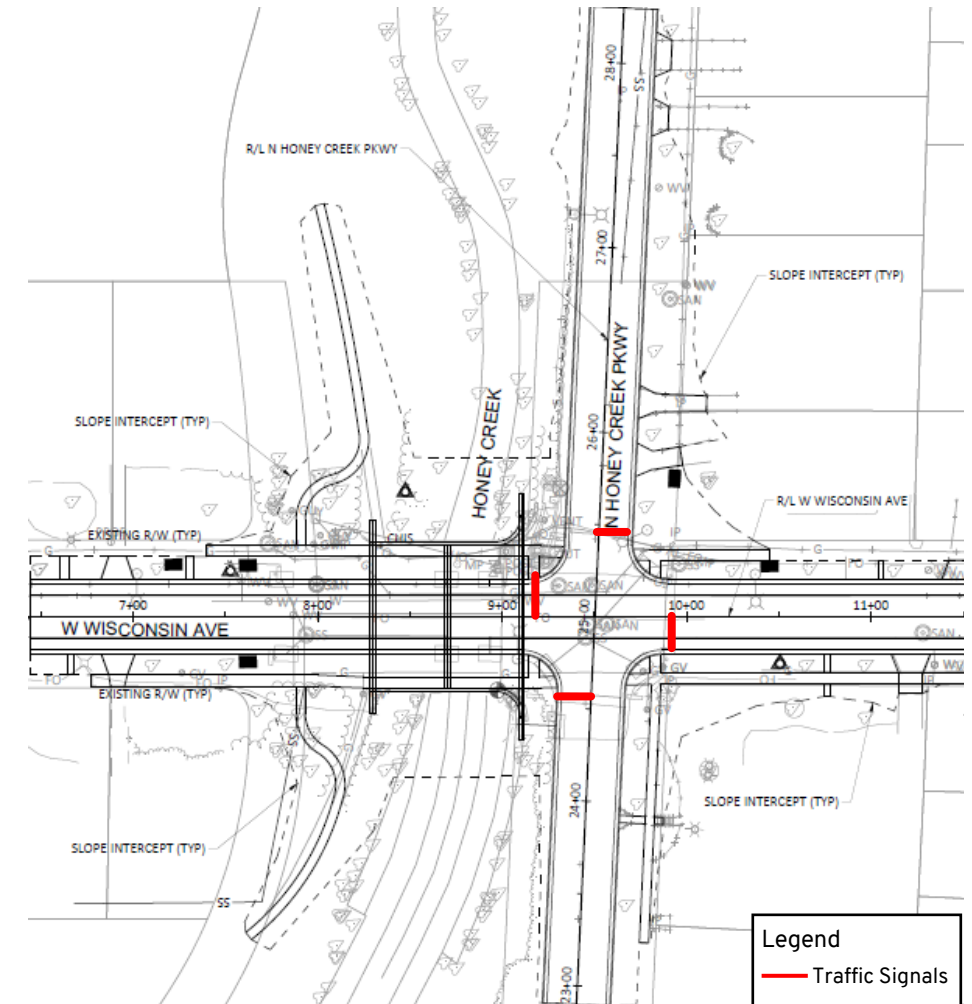
- + Concrete Slab Structure w/ Raised Profile (Two Span)
 - Existing prominent, grass terraces
 - Proposed grass terraces
 - 8.5' width on the north side (10' sidewalk)
 - 12.5' width on the south side (6' sidewalk)
 - Visual continuity along Wisconsin Avenue



SIDEWALK & UNDERDRAIN DETAIL

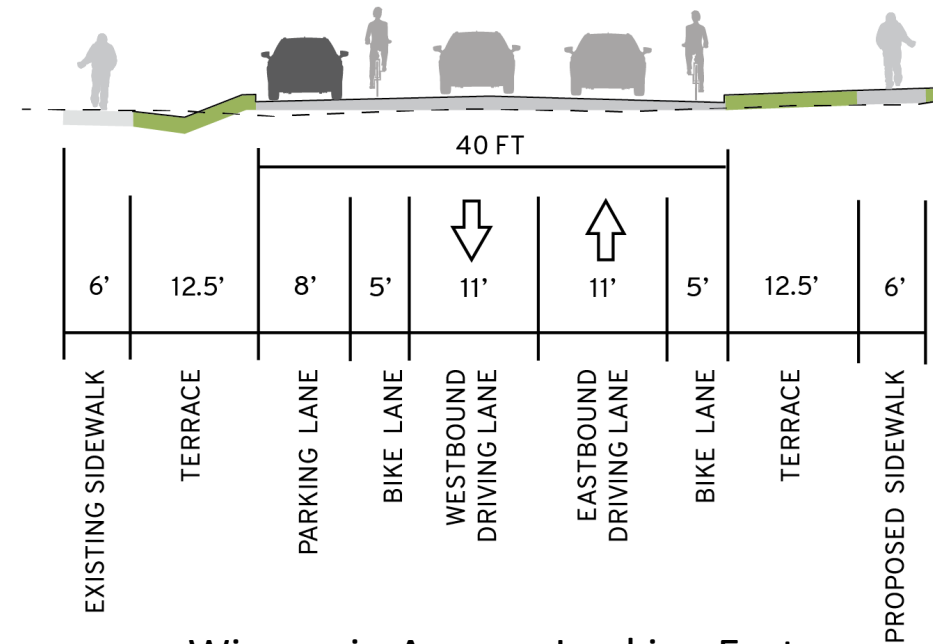
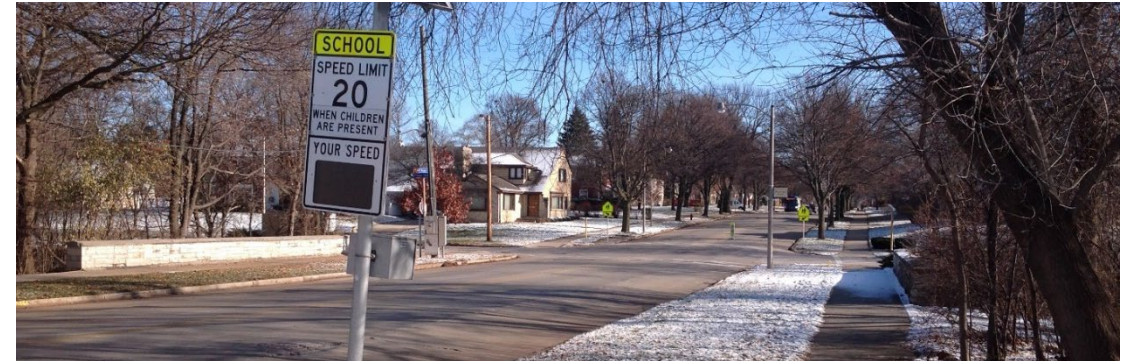
Preferred Alternative

- + **Haunched Slab Bridge w/ Raised Profile (Two Span)**
 - Raise bridge above floodplain to convey the 100-year flow rate without overtopping
 - Limits of road work
 - Wisconsin Avenue ~ 700 feet
 - Honey Creek Parkway ~ 540 feet
 - Honey Creek Parkway intersection
 - Rebuild intersection
 - Install new traffic signal to improve safety
 - Municipal water main
 - Replace between Glenview Avenue & N. 79th Street
 - Provide a more reliable system



Preferred Alternative

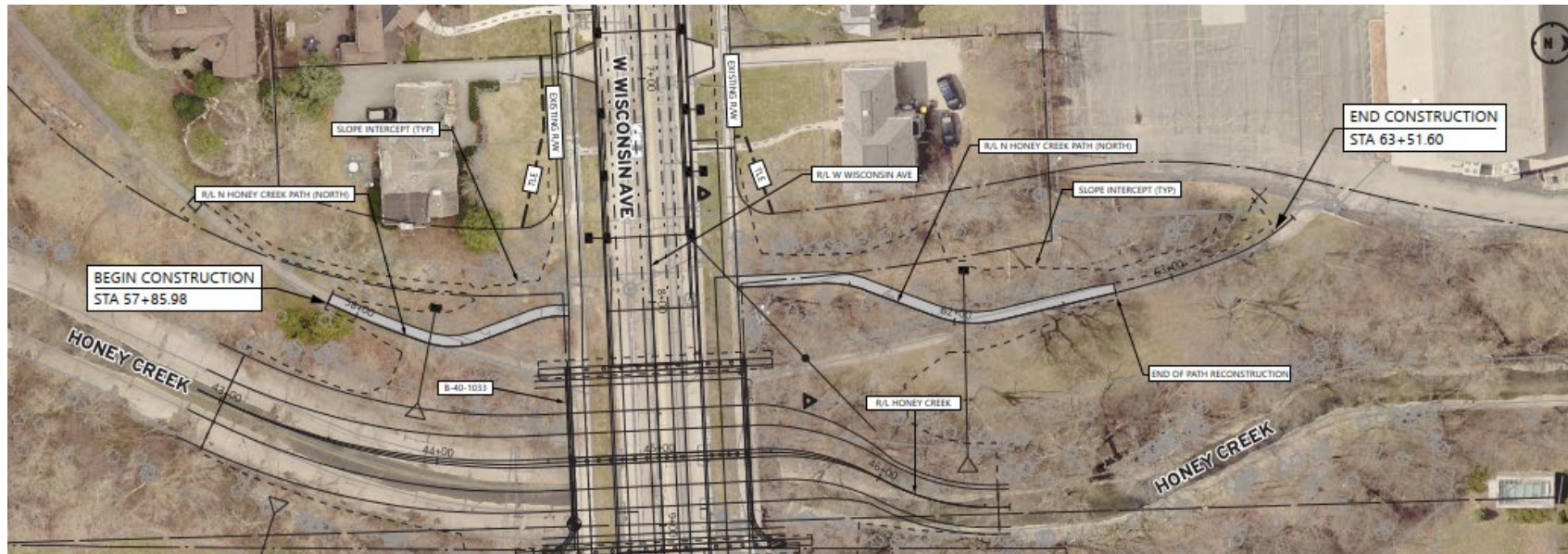
- + Haunched Slab Bridge w/ Raised Profile (Two Span)
 - Bicyclist safety
 - Include Wisconsin Avenue on-street bicycle accommodations
 - Remove parking from south side to provide dedicated bicycle lanes in each direction
 - Pedestrian safety
 - Replace impacted sidewalk
 - Install ADA-compliant curb ramps
 - Realign existing path on west side of Honey Creek



Wisconsin Avenue Looking East

Preferred Alternative

- + Concrete Slab Structure w/ Raised Profile (Two Span)
 - Pedestrian Path west of Honey Creek
 - Modifications due to bridge and roadway construction
 - City and County are working on a Memorandum of Understanding (MOU)
 - Ultimate Path layout to be part of future project



Preferred Alternative

+ Street Lighting

- City and County facilities to be impacted and replaced
- Maintenance of lighting anticipated during construction

+ MMSD Bypass Pump Station

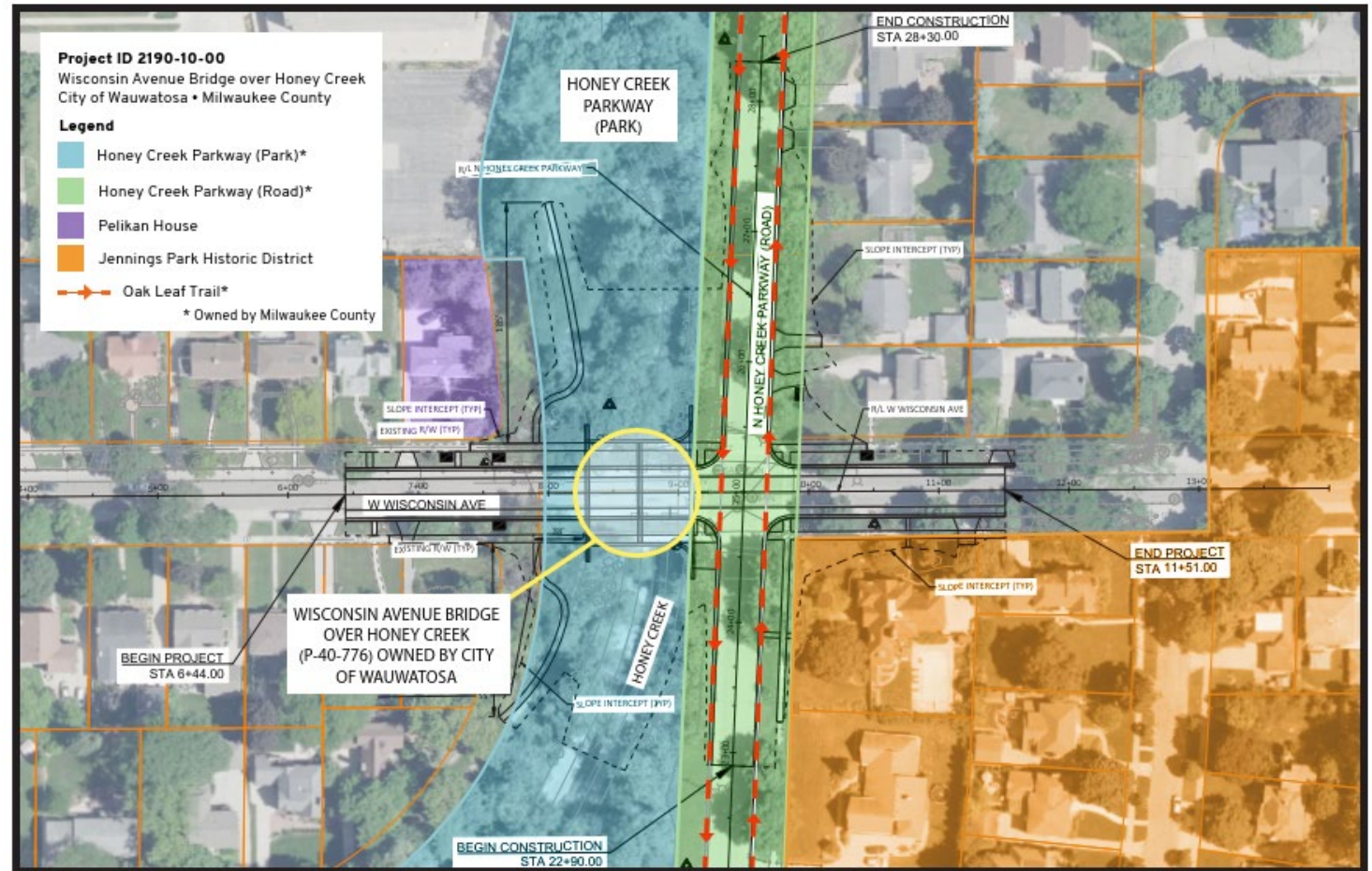
- Demolition/abandonment plans
- Coordination with MMSD



Environmental Documentation

+ Historic & Public Resources

- Honey Creek Parkway – listed on the National Register of Historic Places (NR)
 - Adverse effect due to bridge removal
- Jennings Park Historic District – eligible for the NR
 - No adverse effect/no effect
- Pelikan House – being treated as eligible for the NR
 - No adverse effect/no effect
- Oak Leaf Trail



Environmental Documentation

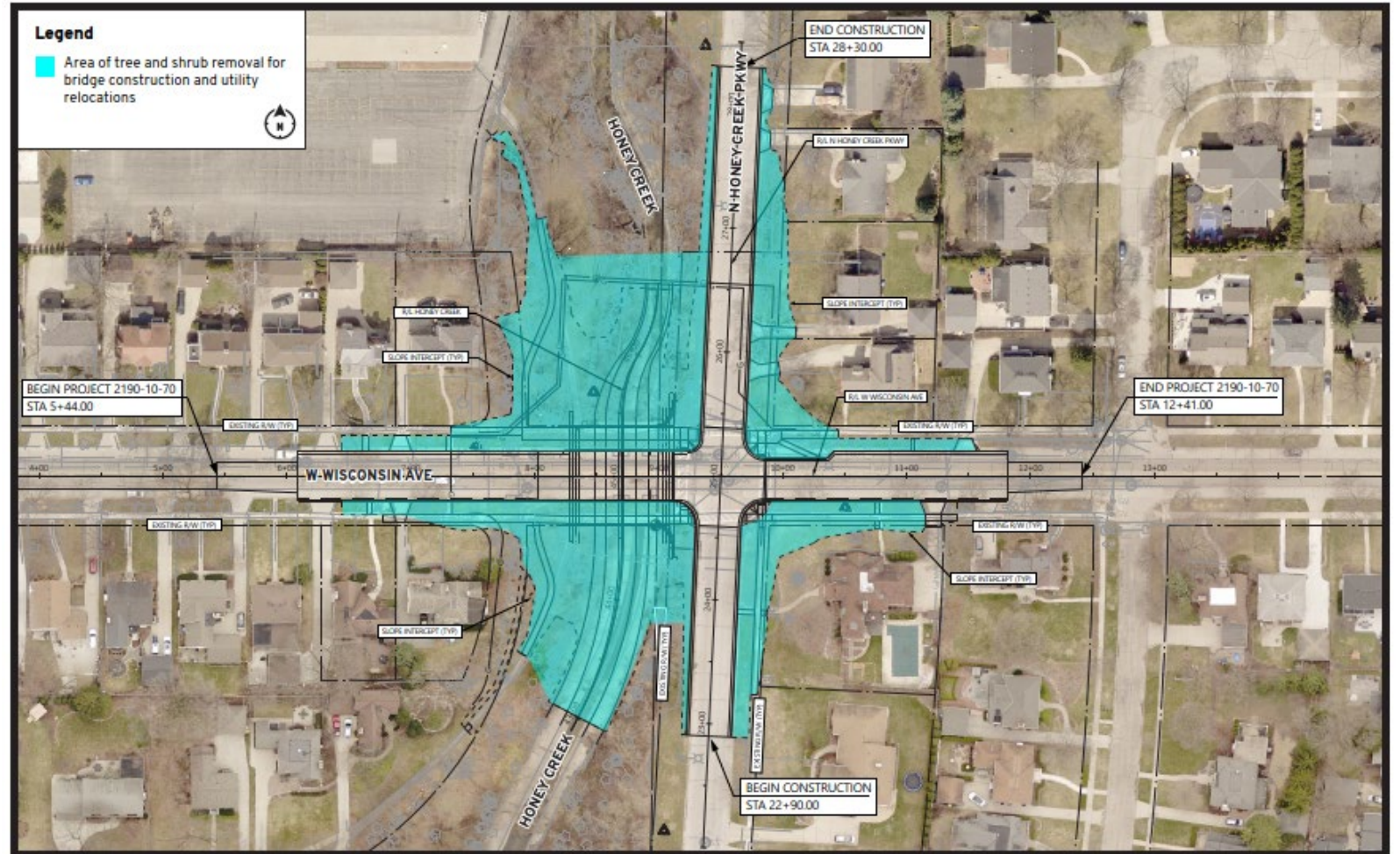
- + **Mitigation for Honey Creek Parkway adverse effect due to removal of existing bridge**
 - The new bridge will be sheathed with natural stone on its parapets, abutments, wingwalls, and pier – all of which are consistent with the existing structure.
 - The new bridge will mimic the existing bridge’s sweeping curved parapets that approach the Honey Creek Parkway (Road) intersection.
 - The new bridge will include grass terraces and maintain the same width as the existing bridge to preserve the sense of visual continuity along the Wisconsin Avenue corridor.
 - Street trees located in the Wisconsin Avenue grass terraces that are impacted by the proposed project will be replaced by the City of Wauwatosa.
 - The project team will attempt to salvage existing bridge stones and incorporate those stones into the new bridge as much as practical.
 - Consistent with the Programmatic Agreement for Milwaukee County parks and parkways, bridge aesthetics will be submitted for WisDOT Cultural Resources, SHPO, and Milwaukee County Parks concurrence prior to PS&E.
 - *Note: Final environmental commitments to be coordinated with SHPO in Spring 2024.*



Environmental Documentation

+ Tree and Shrub Impacts

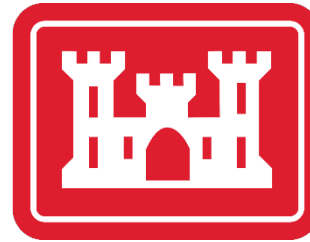
- Resulting from bridge construction & utility relocations
- USACE Honey Creek Flood Management Project impacts are not fully known
- All parties working together on minimizing impacts & developing restoration plans
- Clearing for utility work may begin in March 2024
- Majority of clearing to occur late 2024



Environmental Documentation

+ Agency Coordination

- Department of Natural Resources
- US Fish and Wildlife Service
- State Historical Preservation Office
- SEWRPC
- US Army Corps of Engineers
- Native American Tribes
- Milwaukee County Parks
- Milwaukee Metropolitan Sewerage District
- Milwaukee Regional Medical Center
- Milwaukee County Transit System



Funding

- + Approximate construction cost = \$5.6M
- + Project agreement
 - In 2021, Transportation Secretary Thompson and Governor Evers announced WisDOT's commitment to provide \$2.85M in state funding to the City for raising the bridge
 - City of Wauwatosa funding
 - Work not covered by state funds
 - Honey Creek Parkway
 - Traffic signal
 - Water main
 - Street lighting
 - No federal funding



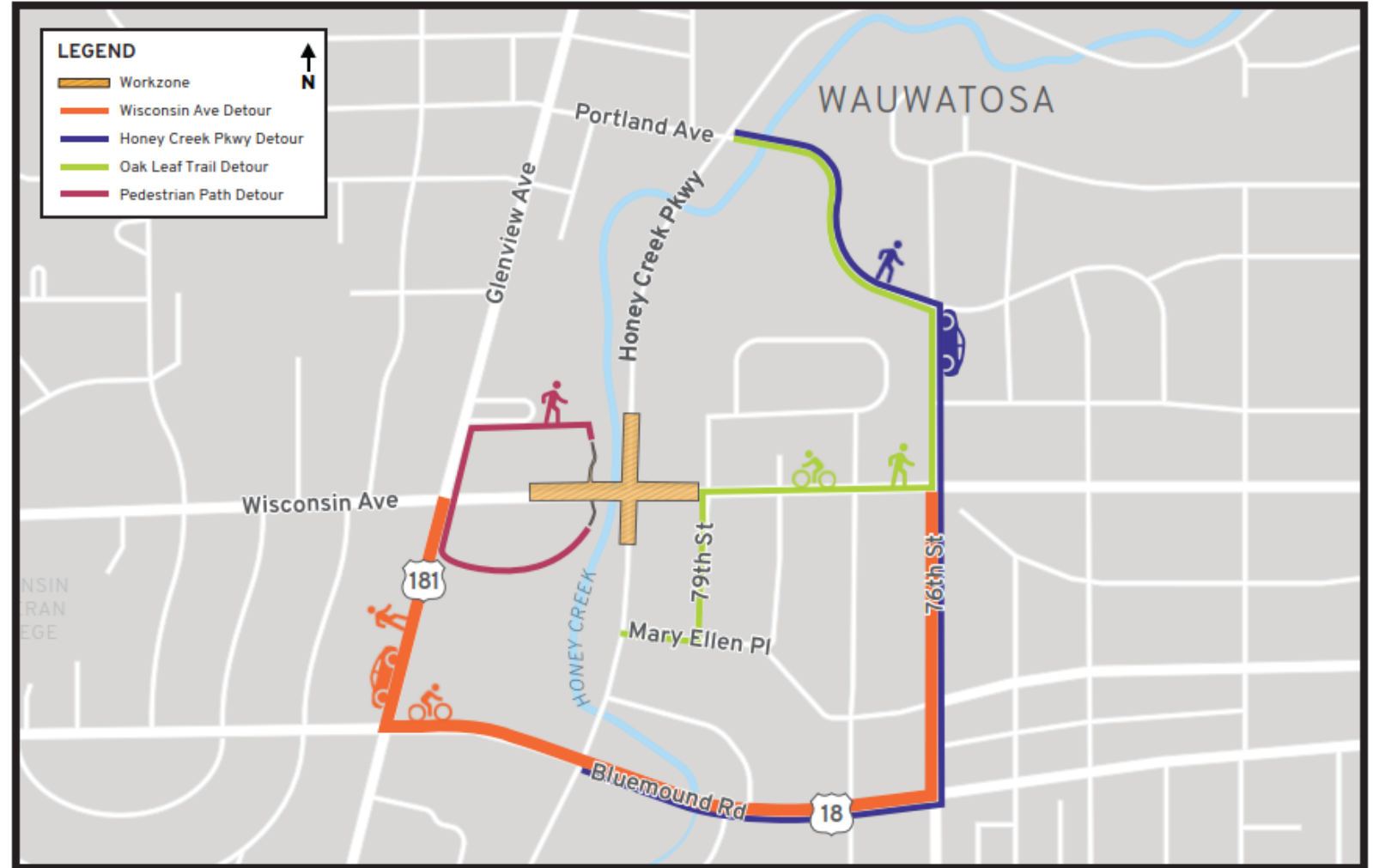
Project Schedule

- + **Environmental Documentation**
 - Section 106 approvals – Spring 2024
 - Environmental report – Spring 2024
- + **Design**
 - 90% plans – August 2024
 - Final plans – November 2024
 - Let (Bid Opening) – February 2025
- + **Construction - 2025**
 - March – November



Construction Detours

- + **Wisconsin Avenue**
 - 76th St to Bluemound Rd to Glenview Ave
- + **Honey Creek Parkway**
 - Portland Ave to 76th St to Bluemound Rd
- + **Oak Leaf Trail**
 - Portland Ave to 76th St to Wisconsin Ave to 79th St to Mary Ellen Pl
- + **Pedestrian Path**
 - Brookside Pl to Glenview Ave to St Jude Ct



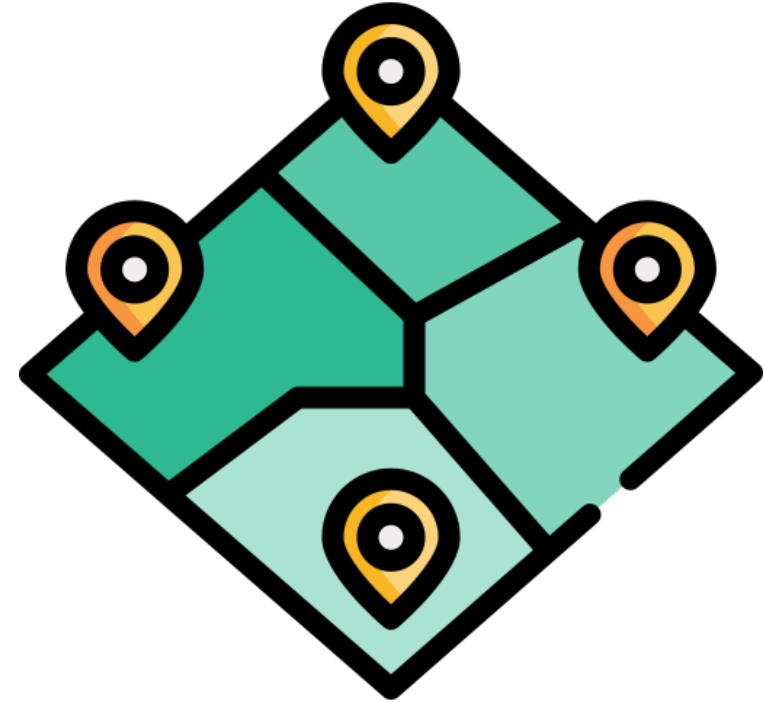
Right-of-Way

+ Real Estate

- No fee acquisition
- 6 Temporary Limited Easements (TLE) for grading slopes
- No relocations
- No access control

+ Appraisals & Negotiations by Single Source, Inc.

- Jim Weisling
- Email: james@single-source-inc.com
- Phone: 414.750.9939
- Spring 2024 – Fall 2024
 - Process will begin with appraisal staking



Utility Coordination

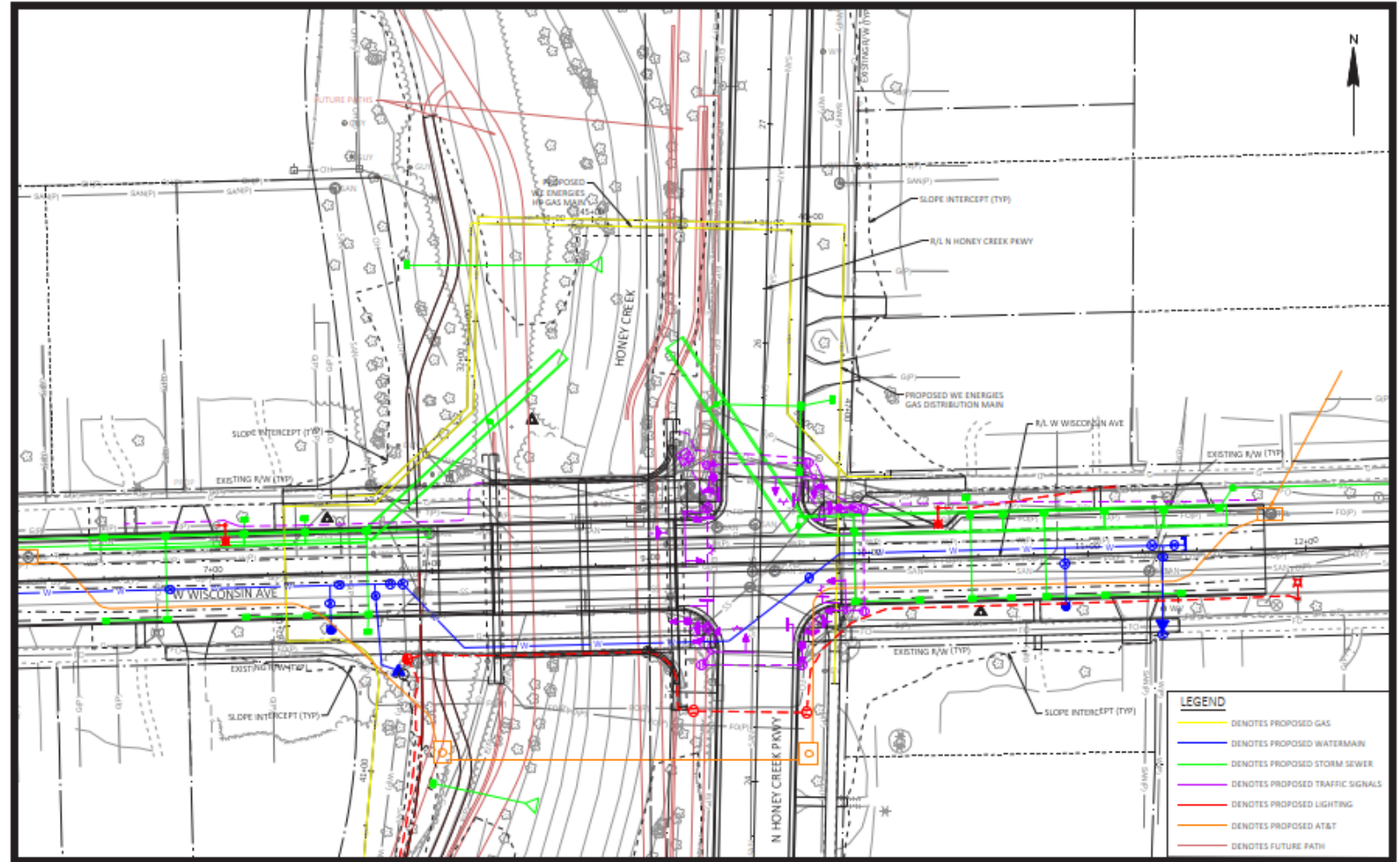
+ Utilities Identified

- AT&T Wisconsin – Communication Line
- Everstream – Communication Line
- Milwaukee County Parks – Lighting
- Milwaukee Metropolitan Sewerage District – Sewer
- Spectrum – Communication Line
- Verizon Business – Communication Line
- Wauwatosa, City of – Lighting, Sewer, Signals, Water
- We Energies – Electric
- We Energies – Gas/Petroleum



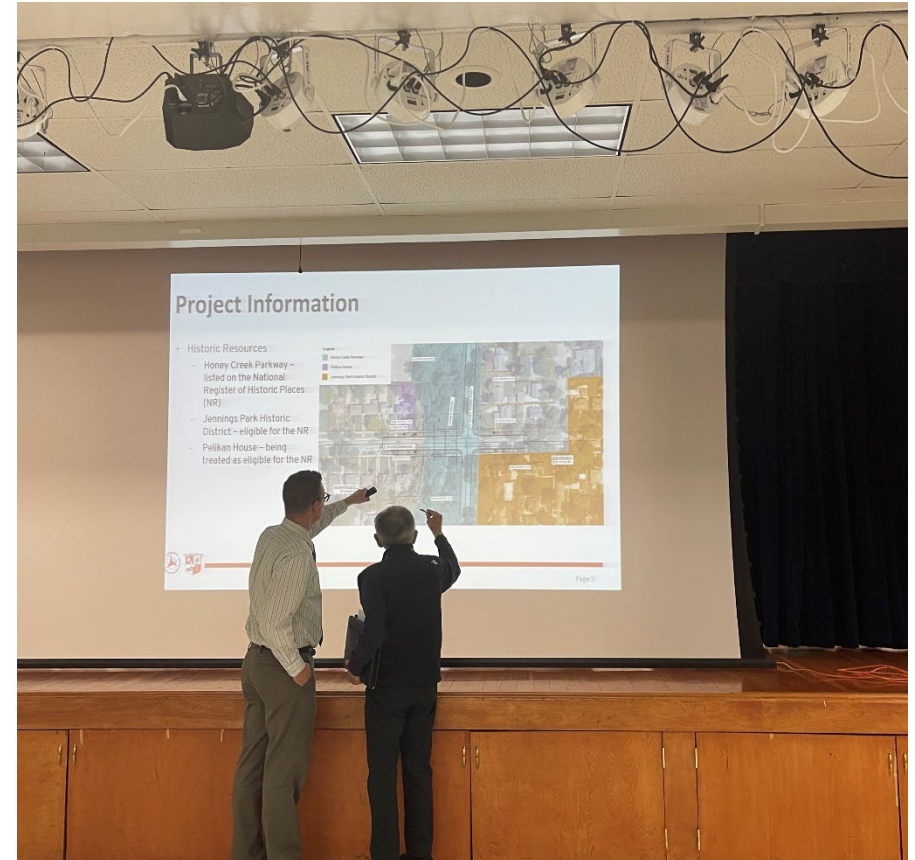
Utility Coordination

- + Relocation work may begin in June and extend through 2024
- + Major work by We Energies Gas and AT&T



Public Involvement

- + Meetings – 3 planned
 - December 15, 2022 – PIM #1 (after SHPO review)
 - February 22, 2024 – PIM #2 (real estate kick-off)
 - Early 2025 – PIM #3 (w/ contractor)
- + City to prepare email blasts
 - Project status
 - Construction staging
 - Schedule updates
- + City Website
 - www.wauwatosa.net/bridge



Honey Creek Flood Management and Habitat Restoration Project



This U.S. Army Corps of Engineers, Milwaukee County Parks, and MMSD project partnership will:

- Naturalize 8,660 feet of Honey Creek
- Slow creek flows
- Improve habitat
- Reconnect the creek to the floodplain

For more information, visit mmsd.com/honeycreek or contact:

Mark Mittag, P.E., CFM
Sr. Project Manager
mmittag@mmsd.com
414-225-2147



**US Army Corps
of Engineers.**



**Milwaukee County
PARKS**
countyparks.com



MMSD KK River Concrete Channel Removal at Pulaski Park

- Before (2016)



- After
(2021 - ~1 year after construction)



Underwood Creek: Wauwatosa example



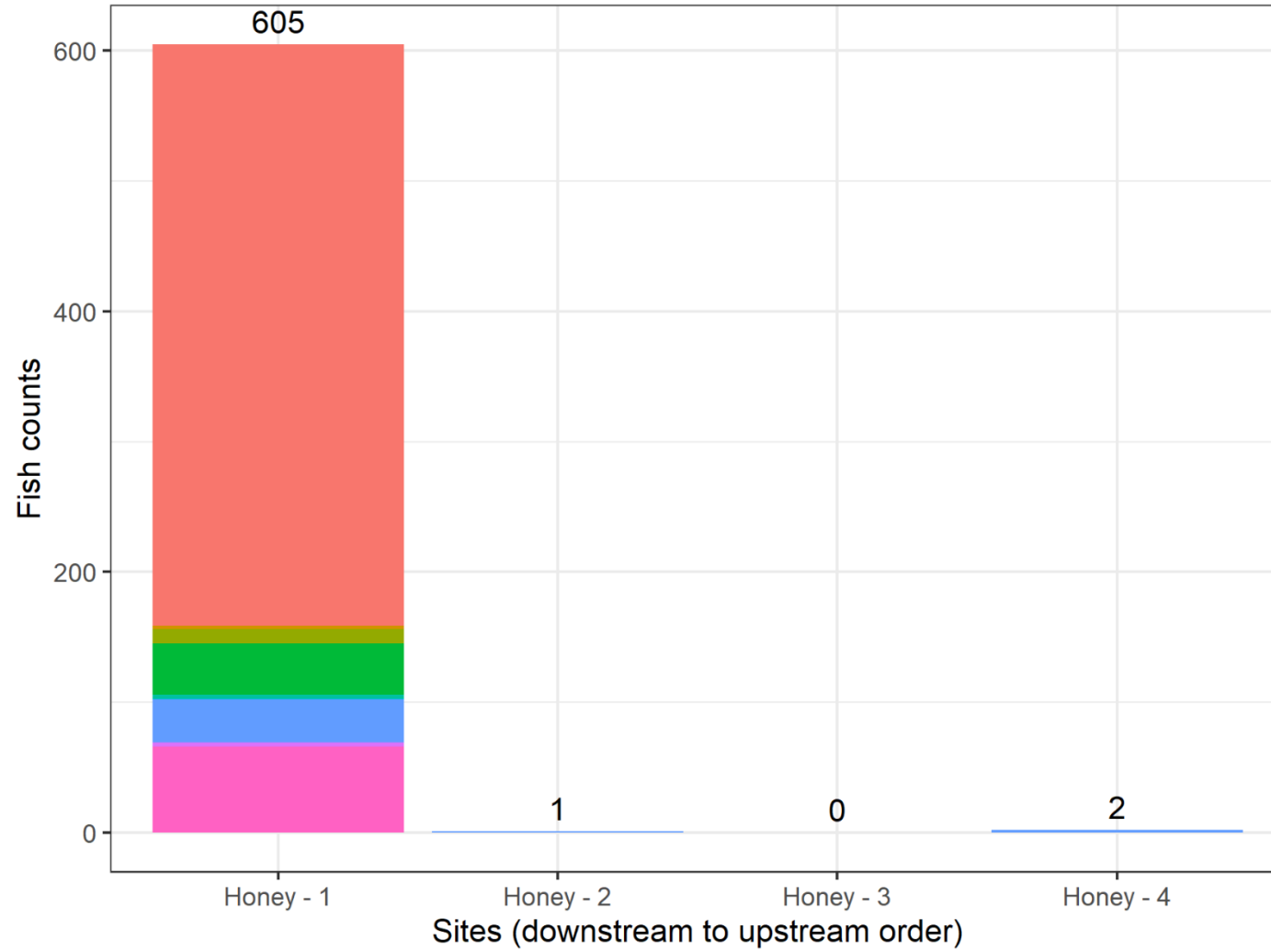


August 2023 USGS Honey Creek Pre-Project Fish Sampling - Site Locations and Results

Source: Esri, Maxar, GeoEye, Earthstar Geographics, CNES/Airbus DS, USDA, USGS, AeroGRID, IGN, and the GIS User Community

Observed
fish
abundances

Honey Creek fish counts



Fish common name

- blacknose dase
- bluegill
- central stoneroller
- creek chub
- fathead minnow
- goldfish
- green sunfish
- pumpkinseed
- white sucker
- NA



Wisconsin Lutheran High School and St. Jude's the Apostle School –Field Experience During USGS Fish Sampling

ONE-ON-ONE DISCUSSION

