

# Hart Park Complex

7300 Chestnut Street

*A 19.5 acre meadow purchased by the City became its first public park in 1921. Athletic fields, tennis courts, and a skating rink were established in "City Park" by 1926. A field house and football field followed in 1929, with stadium lighting debuting in 1930. During the Great Depression, the federal Works Progress Administration (WPA) improved the park with stone walls along the river, a fieldhouse addition, new football field, bleachers, and parking lot. In 1938, the WPA built an indoor curling rink, and in 1940, the club-house and recreation building.*



Photo by: Brian J. Faltinson



Photo courtesy of City of Wauwatosa

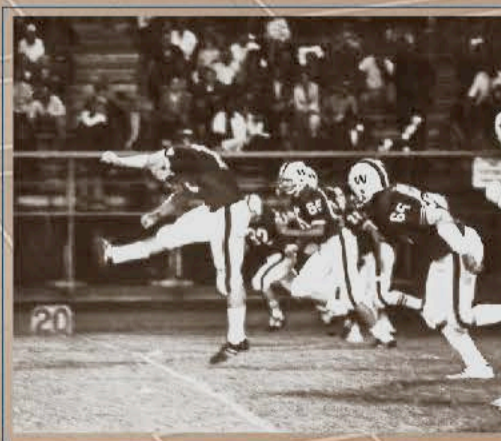


Photo courtesy of City of Wauwatosa

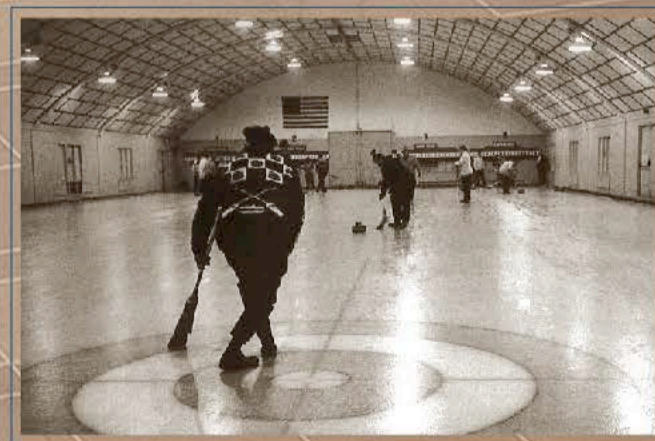


Photo courtesy of City of Wauwatosa



Photo courtesy of Sentinel Structures, Inc.

City of Wauwatosa Designated Historic Place